



**Temperature & Process Instruments, Inc.**  
 1767 Central Park Avenue  
 Suite 112  
 Yonkers, NY 10710  
 Web Site: [www.tnp-instruments.com](http://www.tnp-instruments.com)  
 Email: [info@tnp-instruments.com](mailto:info@tnp-instruments.com)  
 Phone: 914-673-0333  
 Fax: -866-292-1456

## PSC PLMS Series Infrared



### Thermometers for Electrical System Maintenance Applications

# HVAC and Energy Savings

## Troubleshooting and Diagnostic with Portable Infrared Thermometers



### PLMS Series

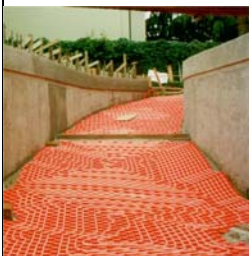
The PLMS is a fundamental tool for ANY heating engineer, plumber, or any other HVAC technician. Non-contact temperature measurements allow for fast and easy troubleshooting. This unit pays for itself in no time! Stay ahead of others with

the right equipment.

### Thermal Insulation Diagnostic Energy Saving

In today world of rising energy cost, it is critical to manage and control your energy cost. Non-contact Infrared thermometers are an simple and economical instrument which can help you. By quickly and easily scanning around doors, windows heating ducts, you will be able to measure the temperature and see where under insulated areas are loosing heat. The PLMS Series of non-contact infrared thermometers are ideal for:

- ✓ Wall
- ✓ Roof
- ✓ Windows
- ✓ Duct



### Floor and Wall Heating Panel

Scanning the floor or wall heating panels allows you to check homogeneity of the heating or cooling system & easily allows you to find any differences in temperature, which can mean the presence of any faults or obstructions.

### Boiler Heating Circuit Diagnostic

- ✓ Measure the flow and return temperatures



- ✓ Verify Thermostat settings
- ✓ Check performance of boiler measuring the flue gas temperature
- ✓ Check operative temperature of pumps

### Air Conditioning Circuit Diagnostic

- ✓ Air conditioning grills



- ✓ Check coils, compressors and any bearings for overheating
- ✓ Electronic circuits
- ✓ Electrical connectors

### Additional Applications

- ✓ Check steam traps
- ✓ Measure temperatures of emergency relief valves
- ✓ Find water leaks on wet wallboards. Lower temperatures could indicate Moist spots on walls generating water evaporation
- ✓ Checking for coil condensation on the lines in refrigeration systems & circuits

